

Get powerful, timely information from a drone that is small, smart, survivable, and ready to scale.

Onboard AI. Off-the-charts capability.

Skydio X10D delivers mission-critical data wherever and whenever you need it with the best cameras on a sUAS, industry-leading autonomy, and advanced AI. Its onboard computing power enables flights to be automated so operators can focus on their missions instead of flying. Including in complex GPS-denied or high EMI environments. And with Skydio NightSense, even in the dark.

An open, modular platform.

RAS-A compliance and open MAVLINK protocol enable Skydio X10D to support third-party and government-owned flight application software. Four attachment bays enable Skydio X10D to be configured on the go to fit mission-specific needs.

Commercial scale innovation. Combat ready tech.

Designed and assembled in the USA to comply with the National Defense Authorization Act (NDAA), Skydio X10D is built at enterprise scale and meets exacting defense requirements so you can move with speed and efficiency.

IP55

Certified against dust and water.

<40 sec

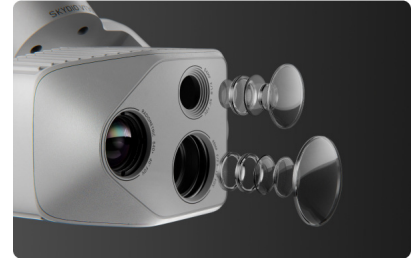
Deployment time.

Blue UAS

On the Blue UAS cleared list.

45 mph

Max flight speed.



Visionary cameras.

- 64 MP narrow
- 48 MP telephoto
- 50 MP wide with LED flashlight
- Teledyne FLIR Boson+ thermal sensor



Onboard AI.

- Six custom 32 MP navigation cameras
- 360-degree visibility
- Autonomous flight, day or night



Ready for anything, anytime, anywhere.

- 4.7 pounds
- Open, modular platform
- Multi-band support

Technical Specs



Aircraft

Startup Time	Under 40 seconds
Dimensions (unfolded, propellers)	31.1" x 25.6" x 5.7"
Dimensions (folded)	13.8" x 6.5" x 4.7"
Weight (including batteries)	Connect SL: 2.11 kg / 4.65 lbs Connect MH: 2.14 kg / 4.72 lbs
Max Hover Time	35 minutes
Max Flight Time	40 minutes
Ingress Protection Rating	IP55
Operational Temperature Range	-20 °C to +45 °C / -4F to 113 F
Wireless Range (no interference, line of sight operation)	Connect SL: 12 km / 7.5 miles Connect MH: 10 km / 6.2 miles
Obstacle Avoidance Coverage	True 360°



Controller

Controller Dimensions	10.5" x 5" x 3"
Screen	6.6" dynamic AMOLED touchscreen 120 Hz adaptive refresh rate Resolution: 2340 x 1080 pixels Brightness: 1750 nits (outdoor peak) Pixel density: 392 ppi
Weight	1.14 kg / 2.50 lbs
Max Range*	Connect SL: 1.2 km / 7.5 miles Connect MH: 10 km / 6.2 miles
Operating Frequency	Connect SL: 2400-2483.5 MHz 5150-5850 MHz Connect MH: 1625-1725 MHz 1790-1850 MHz 2040-2110 MHz 2200-2300 MHz 2300-2390 MHz 2400-2500 MHz
Ingress Protection Rating	IP54
Wired Outputs	HDMI (type A) & USB-C

Telephoto Camera

Sensor	Sony IMX586-K 1/2" 48 MP CMOS
Diagonal Field of View	13°
Focal Length	35 mm (190 mm equivalent)
Max Video Resolution	3840 x 2880

Wide Camera

Sensor	Sony IMX686 1/1.7" 64 MP CMOS
Diagonal Field of View	93°
Focal Length	8 mm (20 mm equivalent)
Max Video Resolution	3840 x 2880

Narrow Camera

Sensor	Sony 1/1.7" 64 MP CMOS
Diagonal Field of View	50°
Focal Length	10 mm (46 mm equivalent)
Max Video Resolution	3840 x 2880
Aperture	f/1.8

Thermal Camera

Thermal Imager	Teledyne FLIR Boson+ Uncooled VOx Microbolometer
Diagonal Field of View	41°
Focal Length	13.6 mm (60 mm equivalent)
Aperture	f/1.0
Thermal Sensitivity	<30 mK NEDT
Infrared Temperature Measurement Accuracy	larger of ± 5 °C or 5%
Max Video Resolution	640 x 512
Temperature Measurement Method	Spot Meter, Area Measurement
Palette	White Hot, Black Hot, Iron Bow, Rainbow